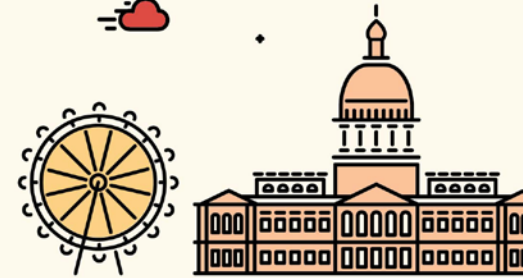


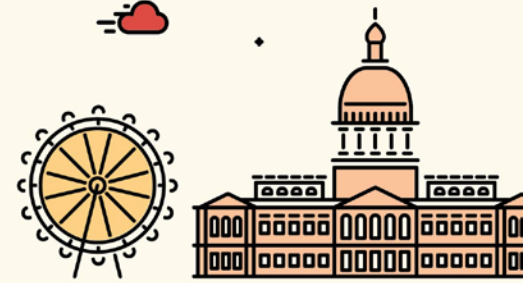


# STAND TOGETHER TO FACE THE FUTURE



2016 NACSA LEADERSHIP CONFERENCE | ATLANTA, GA

# QUALITY SCHOOLS TOGETHER: AUTHORIZERS AND CMOs / EMOs



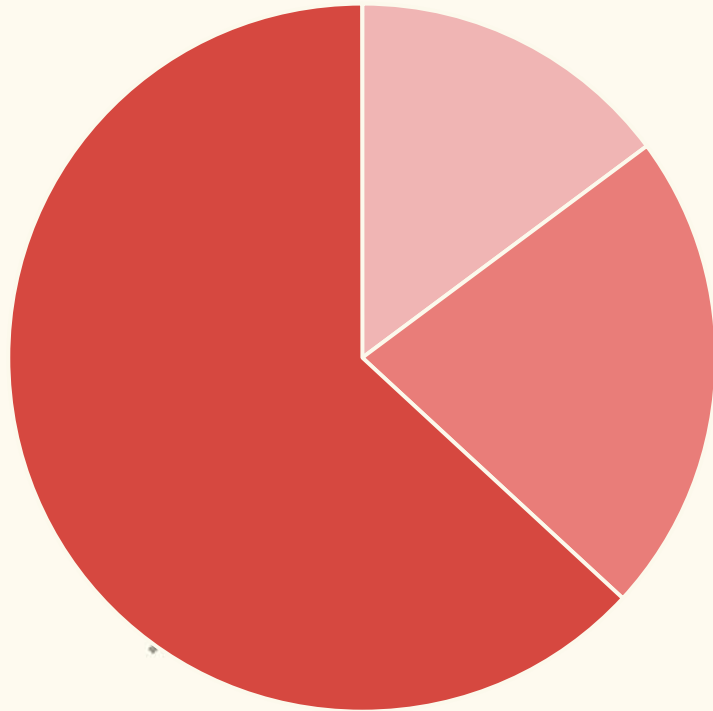
Dana Abbott, [South Carolina Public Charter School District](#)  
Harold Lee, [iLEAD Schools](#)^

Richard Page, [Charter Schools USA](#)  
Elisa Westapher, [NACSA](#)

[#NACSAcon](#)

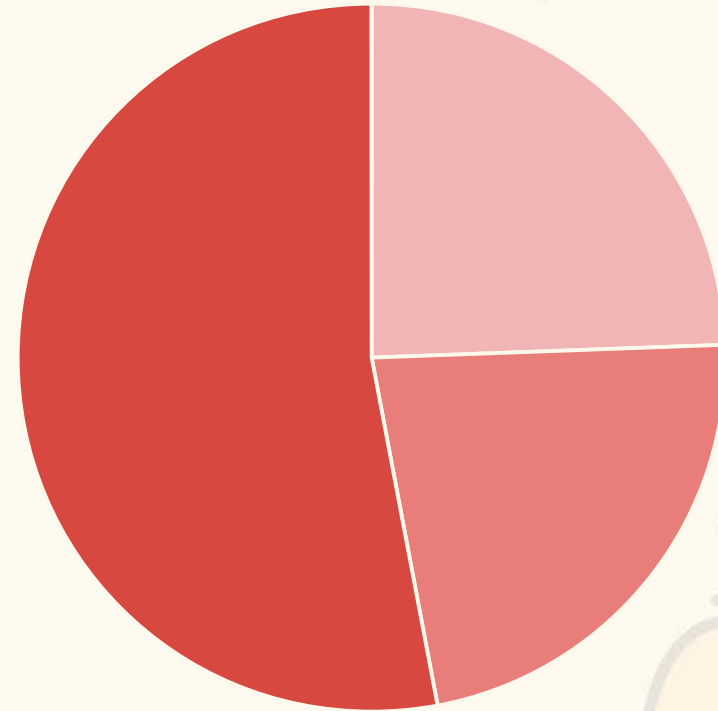
# BY THE NUMBERS

## 2005 Charter School Enrollment



■ CMO ■ EMO ■ Independent

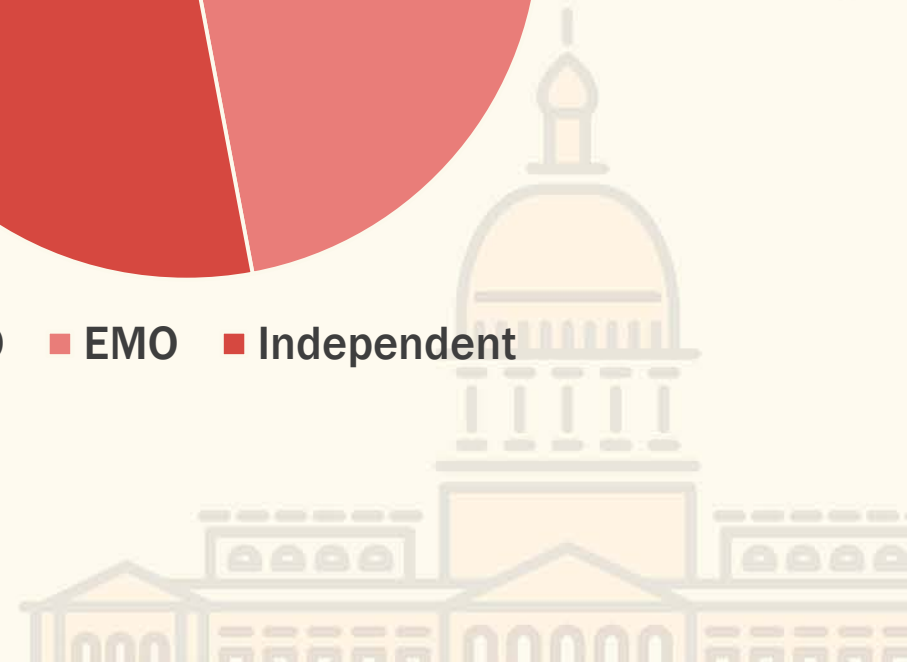
## 2014 Charter School Enrollment



■ CMO ■ EMO ■ Independent

Source: National Alliance for Public Charter Schools

#NACSAcon



# ABCs OF OPERATORS

**Education Service Provider (ESP)**: any third-party entity, whether nonprofit or for-profit, that provides comprehensive education management services to a school via contract with the school's governing board.

**Charter Management Organization (CMO)**: nonprofit education service provider (can be 3<sup>rd</sup> party or direct charter holder).

**Education Management Organization (EMO)**: for-profit education service provider (generally not permitted to hold charter; not all states allow).



## Mission

- The New Jersey Department of Education (NJDOE), Office of Charter Schools (OCS) provides **New Jersey families** with **quality schools**. OCS authorizes charter schools consistent with **national best practice** in charter school authorizing, offering school operators **autonomy** and opportunities for **innovation** in exchange for **accountability** for **student outcomes**.

## Authorizer Overview

- NJDOE is the **state education agency** and **sole authorizer** of charter schools in New Jersey.
- **Commissioner of Education**, appointed by the **Governor**, has **final authority** in the approval, opening, monitoring and renewal of charters in New Jersey.

## The Numbers

- **88** charter schools serving **approximately 46,000** students, or **3%** of the public school students in the state.
- Charter schools are serving **nearly 40%** of the public school population in **Newark** and **Camden**.
- Since 2010, **42 charter schools** have opened and **17 charter schools** have been closed due to academic, fiscal or organizational reasons.

# CMO & EMO Context

- 1995 Charter School Program Act did not contemplate CMOs or EMOs
- Currently there are 8 CMOs and 5 EMOs operating in New Jersey under 20 charters (out of 88 charters)
- Of the 13 CMOs and EMOs currently operating in the state, 11 started operating in the state within the last five years
  - 3 homegrown networks (all CMOs)
  - 3 out-of-state CMOs
  - 5 out-of-state EMOs
- Of the 8 out-of-state CMOs and EMOs, 4 received charters through the new school application process and 4 contracted directly with the board of trustees to turn the school around

# SOUTH CAROLINA CHARTER CONTEXT



70 CHARTERS  
&  
17 AUTHORIZERS

6 EMOs ?

ZERO CMOs

# SC Charter Law: Pertinent Provisions

- Generic reference to management companies and education service providers - charter application must describe responsibilities of such
- State charter application and the SCPCSD application process both require detail about the management company
- Requires all charter board members to be SC residents
- Requires  $\frac{1}{2}$  of charter board members to be elected by parents and employees of the school





# South Carolina Public Charter School District Requirements

- SCPCSD conducts due diligence of management company during the application evaluation stage
- SCPCSD School Contract contains EMO and CMO guidelines
- School Contract with EMO or CMO must adhere to the guidelines and must be reviewed and approved by the SCPCSD before execution = pre-opening condition

