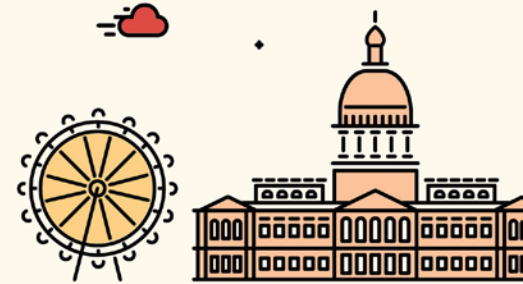
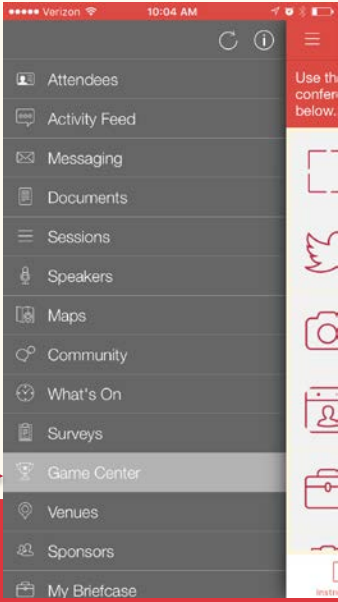


WE NEED AN INTERVENTION

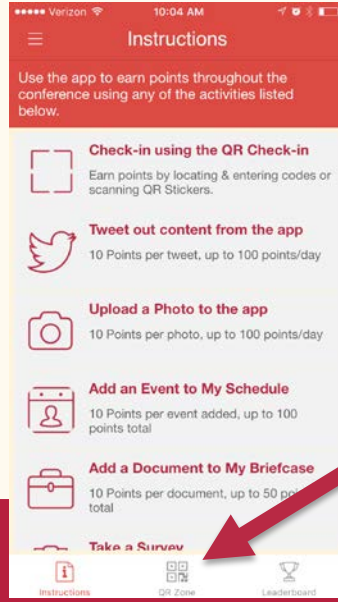
DO NOW: PART I

WRITE DOWN THE NAME OF A SCHOOL THAT IS KEEPING YOU UP AT NIGHT OR HAS MADE YOU LOSE SLEEP RECENTLY.

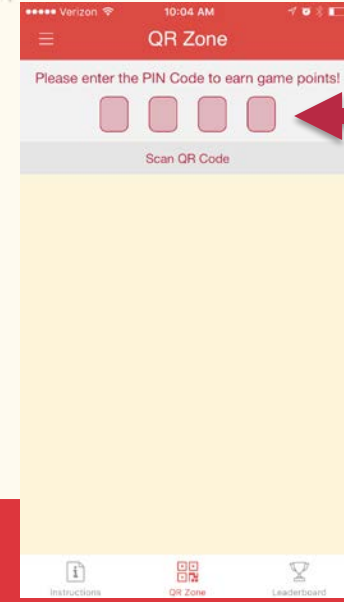




**GO TO THE
GAME CENTER**



**CLICK "QR
ZONE"**



**ENTER YOUR
SESSION'S PIN**

**SESSION NAME: We Need An Intervention: Intervening
with Struggling Schools**

SESSION PIN:

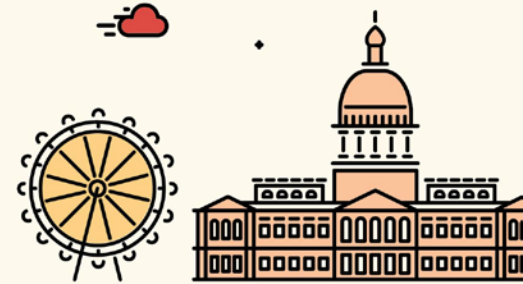
#NACSAcon

9369

**LET YOUR
PRESENTERS
KNOW YOU'RE
HERE, AND EARN
POINTS!**

WE NEED AN INTERVENTION

Intervening with struggling schools



#NACSAcon

William Haft, NACSA
Joshua Halsey, Washington State
Charter School Commission

October 26, 2016
3:30-4:45 pm

In theory, there is no difference between theory and practice. In practice, there is.

Yogi Berra (1925-2015)



SESSION PURPOSES

To identify critical considerations in determining when and how to intervene effectively in a struggling charter school, including how a school's historical performance does/should influence an authorizer's interventions.

To generate practical strategies for addressing current challenges.



DO NOW: PART II

PAIR UP (6 min)

INTRODUCTIONS

SHARE/LISTEN

BIGGEST CHALLENGE?

SWITCH (6 min)

#NACSAcon



DISCUSSION: KEY CHALLENGES

-
-
-
-
-
-
-
-
-
-

#NACSAcon



TYPES OF CHALLENGE

- Establishing Expectations
- Establishing/Implementing Process
- Gathering Information/Evidence
- Authorizer staff/board roles & responsibilities
- School governance/leadership roles/responsibilities
- Media/communications
- Best interests of children & families



A CASE IN POINT: FIRST PLACE SCHOLARS CHARTER SCHOOL

New financial problem for state's first charter school. Seattle Times 10/15/15

State's first charter school given more time to fix its problems. 6/18/15

Charter-school panel learns lesson from troubles at First Place. 6/24/15

State's first charter school was overpaid \$200,000. 9/21/15

Last chance for state's first charter school as concerns deepen. 4/1/15

Second probe launched into state's first charter school. 2/11/15

DISCUSSION: INTERVENTION STRATEGIES

With your partner, identify and discuss 1 or 2 things you can do to manage your current challenge more effectively.

- What is your objective?
- What next step(s) can you take when you get back to your office on Friday or next week?



SHARING OUT: STRATEGIES

#NACSAcon



FIRST PLACE REVISITED: WHEN IS IT TIME TO CLOSE?

New financial problem for state's first charter school. Seattle Times 10/15/15

State's first charter school given more time to fix its problems. 6/18/15

Charter-school panel learns lesson from troubles at First Place. 6/24/15

State's first charter school was overpaid \$200,000. 9/21/15

Last chance for state's first charter school as concerns deepen. 4/1/15

Second probe launched into state's first charter school. 2/11/15

CLOSING GUIDANCE: PREPARING TO MAKE A DECISION

- Establish monitoring and intervention processes (e.g., Ladder of Intervention)
 - Interlude -----
- Gather evidence to affirm/dispel concerns
- Document your concerns and evidence
- Use your process to communicate concerns and evidence
- Direct schools to independent assessment and/or support as appropriate
- Use your process to monitor progress
- Keep decision-makers informed
- Separate legal from non-legal communications



CLOSING: THE THEORY IS THE PRACTICE

As much as we have an obligation to the 260 students currently enrolled in the Lynn Community Charter School, we also have an obligation to the many thousands of students yet to come, who deserve a higher quality public education system. For these students, whose names we do not know and whose faces we do not see, we must ensure that the promise of charter schools and education reform is fulfilled, through a system of high expectations and accountability for results. Excusing poor performance by accepting plans and promises, would be a disservice to future generations of students, in Lynn and throughout the Commonwealth.

Jim Peyser, Massachusetts Board of Education, 2/26/02



RESOURCES

Intervention Flow Charts, Washington State Charter School Commission

Intervention Protocol, Oregon Department of Education (DRAFT)

Navigating the Closure Process, M. Shaw, NACSA Issue Brief

#NACSAcon

KEEP IN TOUCH

William Haft

NACSA


 williamh@qualitycharters.org

 (303) 817-6797

Joshua Halsey

Washington State Charter School Commission

 Joshua.Halsey@k12.wa.us

 (360) 584-9272

